

2<sup>ND</sup> ANNUAL

# Boots, Fiddles & Blue Suede Shoes Spring Music Festival



**Sat. May 19, 2007**

Doors open at 6 p.m. Show at 7 p.m.

**at Eastern High School**

Route 7, Reedsville, Ohio

## MEDIA KIT

FOR MORE INFORMATION CON-  
TACT JENNIFER HUGHES AT  
(74)418-3306 OR EMAIL HER AT  
[jhughes@verizon.net](mailto:jhughes@verizon.net)

## Featuring:

- Dwight Icenhower &  
the Promiseland  
Show Band  
with the Burning Love Trio
- Northwest Territory
- Doug Brewin as Alan Jackson
- High Country



The following is a brief story about the festival and how it got started. Please use it or create your own.

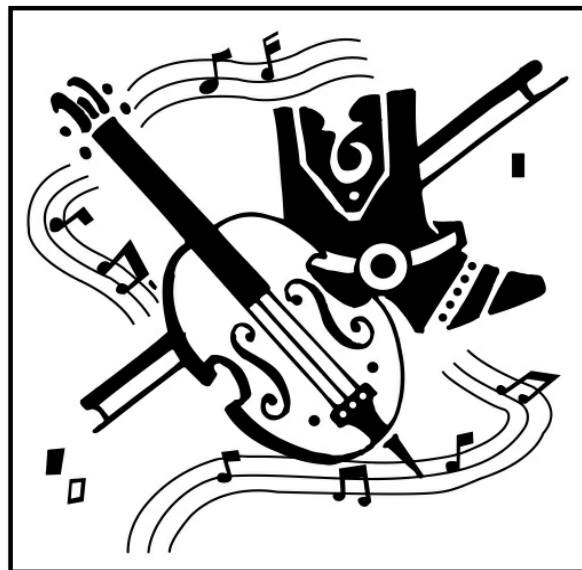
Much of the talent performing at this festival grew up, graduated and now have families in the Gallia, Meigs and Athens Counties.

We have included a summary that can be placed in your community events section.

**For pictures log on to  
[www.dwighticenhowerfanclub.com](http://www.dwighticenhowerfanclub.com).**

The following pages include pictures and information on the performers and bands at the Festival.

Please direct question to Festival Media Coordinator Jennifer Hughes at 740-418-3306 or by email [media@dwighticenhowerfanclub.com](mailto:media@dwighticenhowerfanclub.com).



## Second Annual Boots, Fiddles, Blue Suede Shoes Spring Music Festival

The Second Annual Boots, Fiddles, Blue Suede Shoes Spring Music Festival will be held Saturday, May 19, at Eastern High School, located on Route 7 in Reedsville. The show features the High Country Band, Northwest Territory, Alan Jackson Tribute Artist Doug Brewin and Elvis Presley Tribute Artist Dwight Icenhower and the Promiseland Show Band, featuring the Burning Love Trio. Tickets are on sale now and can be purchased by calling Harry Gorrell at 740-667-0155 or Sue Hughes at 740-417-0156.

## Second annual Boots Fiddles Blue Suede Shoes Festival to be held May 19

**REEDSVILLE**— Being dubbed an event like no other, the second annual Boots, Fiddles and Blue Suede Shoes, will bring a little country, bluegrass and rock and roll to Meigs County. All wrapped up in one event, the May 19 festival is sure to be a great event.

The Festival will be held in the Eastern High School gymnasium, located on Route 7 in Reedsville on Sat. May 19. The show begins at 7 p.m. Doors open at 6 p.m. Tickets are available now, or can be purchased at the door the night of the show.

New to the show will be a performance of Alan Jackson tribute artist Doug Brewin. Brewin sings and plays the hit songs recorded by living country music legend Alan Jackson, capturing the true look, feel and experience of Alan Jackson in concert. Brewin uses his own natural voice and really plays the guitar... he does not 'lip-sync'.

Dwight Icenhower and the Promiseland Show Band, with featured guests the Burning Love Trio will perform at the event. Icenhower, known for his vivid portrayal of the King of Rock and Roll. Icenhower Burning Love Trio will also return.

"The Burning Love Trio is a group of very talented singers from Versailles, Ohio that I have had the pleasure of working with several times on stage. The group is made up of three ladies, Lynn Blakeley, Tamala Hartzell, and Kathy Magoto," said Icenhower. "They are all very talented and they add so much to the shows."

Boots, Fiddles and Blue Suede Shoes is the brain child of Harry Gorrell, the band leader of the Promiseland Show Band and High Country.

Gorrell is a music lover and a great musician at that. He wanted to put on a festival that would appeal to all music fans. "The boots part of course will appeal to the country music lovers, the fiddles will appeal to the bluegrass lovers and the blue suede shoes part will ....you guessed it appeal to all the Elvis and Dwight fans," explained Gorrell.

Gorrell was so happy with last year's success, he hopes that this year will be as successful.

Acts currently slated to perform are High Country, Northwest Territory, a popular top rated bluegrass band, as well as Dwight and his show band. Other artists also participating are keyboardist Al Babyok, who has performed with Ken Mellons and Toby Keith; guitarist Josh Waters of the Reflections Show Band; Mike Sigler, who has performed at the Grand Ole Opry with Holly Dunn; and Lonnie Coats, who performed with Johnny Paycheck; and Icenhower and his show band.

For ticket information call Gorrell at 740-667-0155 or Sue Hughes at 740-417-0156.

For more on this event visit [www.dwighticenhower.com](http://www.dwighticenhower.com) or [www.dwighticenhowerfanclub.com](http://www.dwighticenhowerfanclub.com).

# Dwight Icenhower's Tribute to Elvis

Media: To arrange an interview with Dwight, Call Jennifer at (740)418-3306

## About Dwight

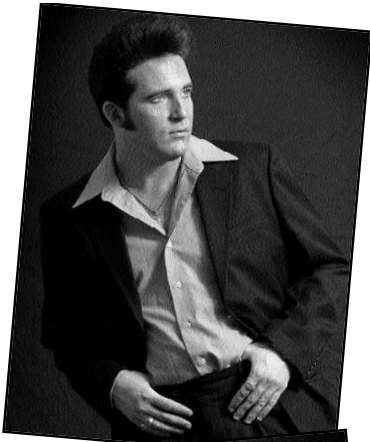
### Icenhower:

Dwight was raised in Pomeroy, Ohio and began paying tribute to Elvis Presley at just 16-years-old.

Now, he is one of the very few Elvis tribute Artists that have made a full-career out of keeping the legend alive. Dwight performs weekly and he keeps the audiences asking for more.

Born four years after the King passed away. Dwight has studied every move that Elvis made and has mastered the 50's, 60's, and 70's eras of Elvis' career. The 25-year-old has performed all over the United States and is planning to perform in Europe in 2007.

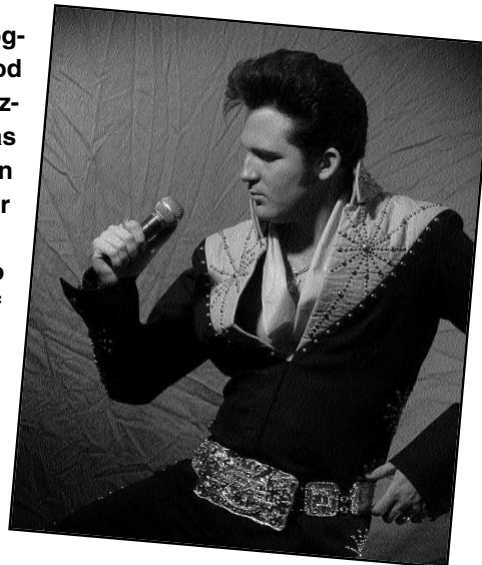
Dwight has had the opportunity to share the stage with some personal friends of Elvis including: DJ Fontana, the Jordanaires, The Sweet Inspirations, Cynthia Pepper, Julie Driscoll, the late Charlie Hodge, Patty Loveless and Joe Esposito.



Dwight is recognized for his good looks and his amazing voice that has sometimes even been mistaken for Elvis himself.

He continues to awe audiences of all ages and his fans enjoy him both on and off stage. He wishes to continue using his talent to keep the memory of Elvis alive for many more generations to come.

Dwight says that he considers it a dream come true to have such a wonderful job and having the opportunity to meet such wonderful people.



Dwight is an award winning Elvis Tribute Artist. Here are some of his most notable accomplishments:

#### 2007

Legends in Concert-Myrtle Beach fill-in  
Legends in Concert-Branson Mo. fill-in

#### 2006

Images of the King Horseshoe Casino 1st Place Winner  
King of the Windy City 1st Place Winner  
Legends in Concert-Myrtle Beach fill-in

#### 2005

Isle of Capri Marquette Iowa Contest 1st Place Winner  
Images of the King Spirit of Elvis Award Winner

Elvis Invasion of SW Florida 1st Place Winner

Lou Vuto's Reflections Theater ETA Contest 1st Place Winner and Peoples Choice

#### 2004

Images of the King World Championship 1st Runner Up  
Ronny Craig's Elvis Explosion 1st Place Winner  
Bluffs Run Casino Elvis Contest 1st Place Winner

Memories Theater Contest 1st Runner Up

West Virginia Lottery's Search for Elvis Contest 1st Place Winner and Peoples Choice

Irv Cass' First Annual Elvis Fest 2004 1st Place Winner

#### 2003

Portage Elvis Fest 1st Place Winner  
Ohio State Fair Elvis Contest 1st Place Winner

Toledo Elvis Fest 1st Place Winner and Peoples Choice

#### 2001

Las Vegas World Finals 2nd Runner Up  
Foot Hills Fall Festival Maryville Tennessee 1st Place Winner

# The Promiseland Show Band

## About: The Promiseland Show Band

The Promiseland Show Band is comprised with an ensemble of endless talent. Although the Promiseland Show Band has not been together all that long, they are a crowd favorite and have quickly become a crowd favorite, gaining a larger fan base at each show. In November of 2006, the band played with DJ Fontana, Elvis Presley's drummer for many years. During that same show the Sweet Inspirations joined the Burning Love Trio

### About the members:

**JOSH WATERS** – Lead Guitar/Vocals: A student of the Old School Sounds, this 25-year-old has experience beyond his years and it shows when he is on stage. He spent several years backing up one of the South's top Blues Brothers tribute groups before signing on with our Vuto at his Gatlinburg, Tennessee Theater.



Elvis Presley Tribute Artist Dwight Icenhower, center, is pictured with the Promiseland Show band and the Burnin' Love Trio. Pictured from front left, Harry Gorrell on Rhythm Guitar, Shane Henthorne on Bass Guitar, Icenhower, Kathy Magoto, Lynn Blakeley and Tammy Hartzell. From back, left, Al Babyok on keyboards, Keith Weber on the drums and Josh Waters on lead guitar.

**AL BABYOK** - Played piano since age 4 and guitar since age 10. Began professional career in bands at age 14. He studied music at the University of Connecticut and privately for 7 years. Al has received musicianship awards for 3 consecutive years at theerklee Jazz Festival. In 2004, Al toured with Scotty Emerick on Toby Keith's "Big Throwdown" Tour. He is able to play many styles of music including country, rock, jazz, and classical. Able to compose and arrange music, write lyrics, sing and arrange harmonies, read music and charts, and play by ear.

**HARRY GORRELL** —Harry is the bass singer and rhythm guitarist. He has several years experience with local bands and has come in contact with some of the top entertainers in the business. He has learned from them, not only the music, but more importantly, he has paid close attention to the things that please the fans. His recipe for a successful performance is have fun, let people now you love what you are doing and do your best to see people go away satisfied.

**SHANE HENTHORNE**— Shane hails from Marietta, Ohio. His first love is music and he thinks Merle Haggard should be resident. He puts his heart and soul into playing the bass guitar. He is also an accomplished guitar player but would rather play the bass. Although this is his first real job with a working band, he plays like a veteran. His knowledge and his input has proven to be a very valuable asset.

**KEITH WEBER**— A Chester, Ohio resident, Keith is the kind of drummer every band dreams of. His natural talent and his never ending humor is a great morale booster for the band. In his earlier years, Keith played with some local groups. He has come out of retirement after taking time off to raise his family and as become a very crucial ingredient for the success of the group. There is never a dull moment around Keith and whether on stage or at rehearsal, his light-hearted and easy going disposition makes the ardest of jobs easier.

## About: The Burnin' Love Trio

The "Burnin' Love Trio" has an interesting history: the group was formed through a fluke. Dwight and the band were trying out new keyboard player in the girls' hometown of Versailles, Ohio. They came to the Versailles High School music room to rehearse one Friday night in September 2005 on their way to a gig in Michigan.

Lynn had always bragged up Dwight and the Promiseland Band, so she invited her friends to stop by and listen. Kathy took her part on the invitation... Having just come from a great Versailles football game, Kathy was revved up and started dancing to the music. Pretty soon, Lynn and Kathy had jumped to the back of the band and began adding back-up vocals and choreography as the band rehearsed.

Although these two were only goofing around, Dwight and the band liked the addition!

The rest is history. Lynn asked Tammy Hartzell, a long-time singing partner, to add the alto to the group, and the trio was born.

**About the members:**  
**KATHLEEN MAGOTO**— Kathy's first performing experience was as a sophomore in Russia High School's plays. She has also performed in the community how choir Rhythm company, and has been taking dance for the past four years. Kathleen has degrees in business management and data processing, and now owns "House of Flowers and Gifts" in Versailles. She is married to the town's postmaster, Steve Monnin. Kathy says, "Dwight is destined for great things, and I'm just thrilled to be a part of it."



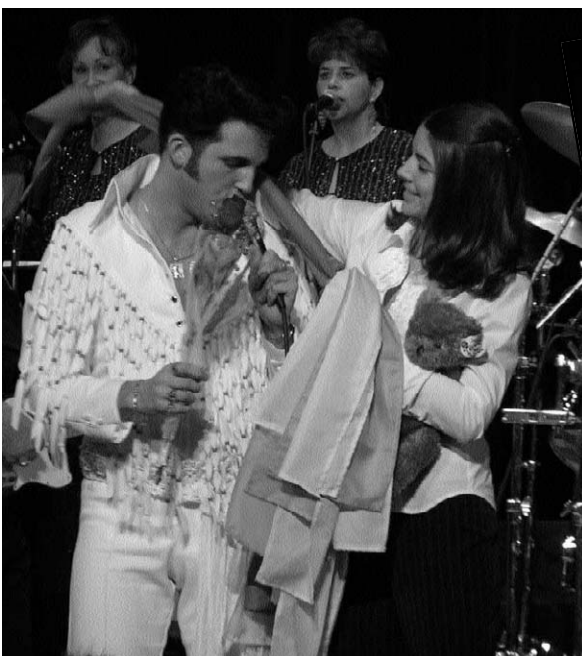
**LYNN BLAKELEY**— Lynn got her start on stage at Gallia Academy High School, where she was active in the band, choir, show choir and musicals. Lynn is a former member of the female quartet "Off the Staff" and has performed at numerous weddings, both as a singer and an accompanist. A graduate of Ohio University, Lynn holds a degree in music and is currently the Choral Director Versailles High School. Lynn and her husband, Tim have two young children, Brooks and Tessa.

**TAMALA HARTZELL**— Tammy started performing in the 4th grade and has gone on to perform many theater roles. Tammy is so active as a wedding singer around the Versailles, Ohio area and was lead singer for The Misty Blues Band while she was in college. In the 1990's, Tammy formed a female quartet called "Off the Staff" with another BLT member. Also a director for community theater shows, Tammy studied theater in college.

Currently working as an Activity Director Certified for the Versailles Health Care Center, Tamala has two daughters, Kim and Crystal and states, "Singing back-up for Dwight is a dream come true!"

For more on Dwight and the Promiseland Show Band visit  
[www.dwighticenhower.com](http://www.dwighticenhower.com) or [www.dwighticenhowerfanclub.com](http://www.dwighticenhowerfanclub.com)

## — What to expect at the Show —



For more pictures log on to  
[www.dwighticenhower.com](http://www.dwighticenhower.com) or  
[www.dwighticenhowerfanclub.com](http://www.dwighticenhowerfanclub.com)

# Doug Brewin as Alan Jackson

Doug Brewin sings and plays the hit songs recorded by living country music legend Alan Jackson, capturing the true look, feel and experience of AJ in concert. Doug uses his own natural voice and really plays the guitar... he does not 'lip-sync'.

Doug explains what he does in this way: "My goal is to provide a fun, entertaining Alan Jackson tribute that is an accurate representation both visually and musically. I try to be as detailed as possible creating the look and sound of AJ, and most importantly respectful to Alan's music. For people who love Country music and Alan Jackson, it's one big celebration! For those few who are unfamiliar with it, it's an amazing discovery. They love it too! Alan's songs are just that incredible."

"Lots of people approach me after a performance and say that I look and sound just like Alan, and I really appreciate that because that's the illusion I'm trying to create in the show. But one of the most rewarding things for me, is when people tell me 'I normally don't like country music, but I sure liked what you sang-- I guess I have to go out and buy some Alan Jackson CDs.' I say, 'Yes you do! And I know you'll love them! I'm not out to convert anyone, but it's exciting to see people discover and appreciate great country music.'"

Doug has been professionally impersonating Jackson for years -- captivating audiences in America and Canada, including Las Vegas, Branson, Atlantic City, Myrtle Beach, Quebec and more.

Doug performs as Alan Jackson in the world-renowned Las Vegas based review "Legends In Concert." He continues to appear, write and record country music with his own band, Late Nite Rodeo as well.



## Some Of Alan Jackson's Hits

Performed By Doug Brewin:

*It's 5'o Clock Somewhere (with Jimmy Buffet)*

*Remember When Drive Chattahoochee*

*Gone Country Mercury Blues (Crazy 'Bout A Mercury)*

*Don't Rock The Jukebox Where Were You? (9-11 Tribute)*

*She's Got the Rhythm (And I Got the Blues)*

*Where I Come From Midnight In Montgomery*

*Who Says You Can't Have It All? [www.memory](http://www.memory)*

*Who's Cheatin' Who? Summertime Blues*

*I'm A Work In Progress Here in the Real World*

*I Don't Even Know Your Name Pop A Top*

*Chasin' that Neon Rainbow Monday Morning Church*

*The Talkin' Song Repair Blues Like Red On A Rose*

For more on Doug visit  
[www.alanjacksontribute.com](http://www.alanjacksontribute.com)

*Here are some frequently asked questions of Doug. He has answered the questions people ask him most often.*

**Q: How long have you been impersonating Alan Jackson?**

A: I started my country band in 2000, featuring Alan's songs, but I officially started with "Legends In Concert" in 2004.

**Q: How long did it take you to be able to impersonate Alan like that?**

A: Well, I'm not sure how long... months? years? It does take a lot of practice and studying, and it's something I have to keep up with... just like exercising, you just can't do it once and say you're done. It's an on-going study.

**Q: Did you have plastic surgery?**

A: No, but I've had people suggest I get brain surgery.

**Q: How many times have you seen AJ in concert?**

A: I think I've seen him in concert about seven times. I wish I could get to see more of his concerts, and other country concerts too, but I'm usually working.

**Q: How did you discover you looked like Alan and how did you get started doing this?**

A: I listened to country music (and lots of other types of music at the time) and wore boots and a Charlie One Horse cowboy hat, but I didn't pay much attention to TV or what the country artists looked like. I guess around about the time Alan's second CD came out (Don't Rock The Jukebox), I had people start telling me I looked like him, so eventually out of curiosity I looked him up at the record store. I recognized his songs and it was odd seeing his picture, but at that time, it was nothing more than a strange coincidence that we looked alike.

Many years go by, and I put together a country band, Late Nite Rodeo, and we feature AJ songs. More years go by and we play at Bally's Wild West Casino in Atlantic City and the Production Manager of LEGENDS In Concert, the show next door, stops by to hear us. I get an audition and I've been doing tribute shows since then. I feel blessed that I happen to look like Alan because I really love his music.

# NORTHWEST TERRITORY

Since 1989, NORTHWEST TERRITORY has been entertaining audiences with its own unique style and enthusiasm.

Bluegrass, gospel, country, fiddle tunes, breakdowns and original compositions are all part of the band's repertoire.

Family humor and fast-paced stage presence make NORTHWEST TERRITORY a favorite wherever they perform.

**MIKE GORRELL** is a longtime veteran of the bluegrass and country music scene. His experience in front live audiences, and on radio and TV specials, makes him the choice as the emcee and stage manager during WT's performances. Mike is an award-winning guitarist and a strong self-styled lead singer. Most of the original material that the band performs comes from Mike's pen. Mike toured professionally with the Whetstone Run Bluegrass Band of central Pennsylvania for over ten years. Mike was one of the original founding members of Northwest Territory in 1989.

**MICHELE BIRKBY-VANCE** has made her mark in the Midwest by winning dozens of fiddle contests in several states. She is a five-time Ohio State Champion who brought her breakdown style of fiddling and smooth vocal harmony to Northwest Territory in 1990. Exceptional intonation with the left hand, a fantastic touch with the right hand bow, a contagious smile, and lots of enthusiasm make Michele a crowd pleaser whenever she performs.

**RADFORD VANCE** brings a variety of traditional bluegrass banjo styles to Northwest Territory. Earl Scruggs, J.D. Crowe, and Don Reno are very prominent influences but more progressive styles appear throughout NWT's music. Radford is also a superb lead and harmony singer and has been a great asset to the band since 1992. His professional credits include tours with Bill Monroe and the Bluegrass Boys, Laurence Lane, and James Monroe.

**KERRI LEHMAN** plays the acoustic upright bass and is a wonderful lead and harmony singer with a clear, strong, and unique vocal sound. Kerri has performed with the late Jimmy Martin and the Sunny Mountain Boys, the Bluegrass Mountaineers, and Faces Made For Radio. Kerri was also a member of the Northwest Territory Bluegrass Band in the early 1990s and a valuable contributor to the Expedition compact disc project.



**For more on Northwest Territory, visit <http://home.insight.rr.com/nwt/index.html>**

# High Country Band

If you were to describe the High Country Band you would have to say they are a group of "re-energized" musicians, committed to providing the public with clean, family oriented "high energy" performances and driven by their love for traditional country music.

The band was formed to try to reach an audience that still loved good traditional country music. Their renditions of artists such as Jones, Haggard, Diffie, Jackson, and many others has entertained many audiences in the tri-state area.

## About the members:

**Harry Gorrell** is the band leader and the lead vocalist. He has several years experience with local bands and has come in contact with some of the top entertainers in the business. He has learned from them, not only the music, but more importantly, he has paid close attention to the things that please the fans. His recipe for a successful performance is have fun, let people know you love what you are doing and do your best to see people go away satisfied.

**Lonnie Coots** is the lead guitarist for the band. He comes with a resume' a mile long. He played on the Grand Ole Opry when he was just 16-years-old. He has worked on the road with the Mandrel Sisters; He played for Dottie West and worked two years with Johnny Paycheck. He is not only a great entertainer, but a great person. Coots and his wife live in Columbus, Ohio.

**Mike Sigler** plays steel guitar for the group. To describe Mike adequately in a short matter, would be impossible. He can be and sometimes is a one-man show. He has played behind some of the top performers on the road and on the Grand Ole Opry. He toured with Holly Dunn before her retirement. Mike came back to his home in Somerset, Ohio where he has his own recording studio, plays for the Ohio Valley Opry in McConnelsville, Ohio and still finds time to play for High Country. Mike is very serious and dedicated to his profession.

**Keith Weber** is the kind of drummer every band dreams of. His natural talent and his never ending humor is a great morale booster for the band. In his earlier years, Keith played with some local groups, including one headed up by Harry and his brother Mike (of Northwest Territory). He has come out of retirement after taking time off to raise his family and as become a very crucial ingredient for the success of the group. There is never a dull moment around Keith and whether on stage or at rehearsal, his light-hearted and easy going disposition makes the hardest of jobs easier.

**Shane Henthorne** is the youngest member of the group. He hails from Marietta, Ohio. His first love is music and he thinks Merle Haggard should be President. He puts his heart and soul into playing the bass guitar. He is also an accomplished guitar player but would rather play the bass. Although this is his first real job with a working band, he plays like a veteran. His knowledge and his input has proven to be a very valuable asset.

The band has several accomplishments to its credit. Harry completed his very first CD at Nashville North Productions in Somerset Ohio.



Pictured above from left, Keith Weber (Drummer), Mike Sigler (Steel Guitar), Harry Gorrell (Lead Vocalist), Lonnie Coots (Lead Guitar), and Shane Henthorne (Bass Guitar).



## To arrange interviews contact:

Jennifer Hughes,  
(740-418-3306

or by email:  
[media@dwighticenhowerfanclub.com](mailto:media@dwighticenhowerfanclub.com)

or

Harry Gorrell, Festival Coordinator  
(740)667-0155

If you would like to cover this event for your Media outlet,  
please contact Jennifer Hughes to make arrangement.

Thank you for your attention in this matter! We hope to see you at the show.